

CERTIFICATE OF LOCATION OF GOVERNMENT CORNER

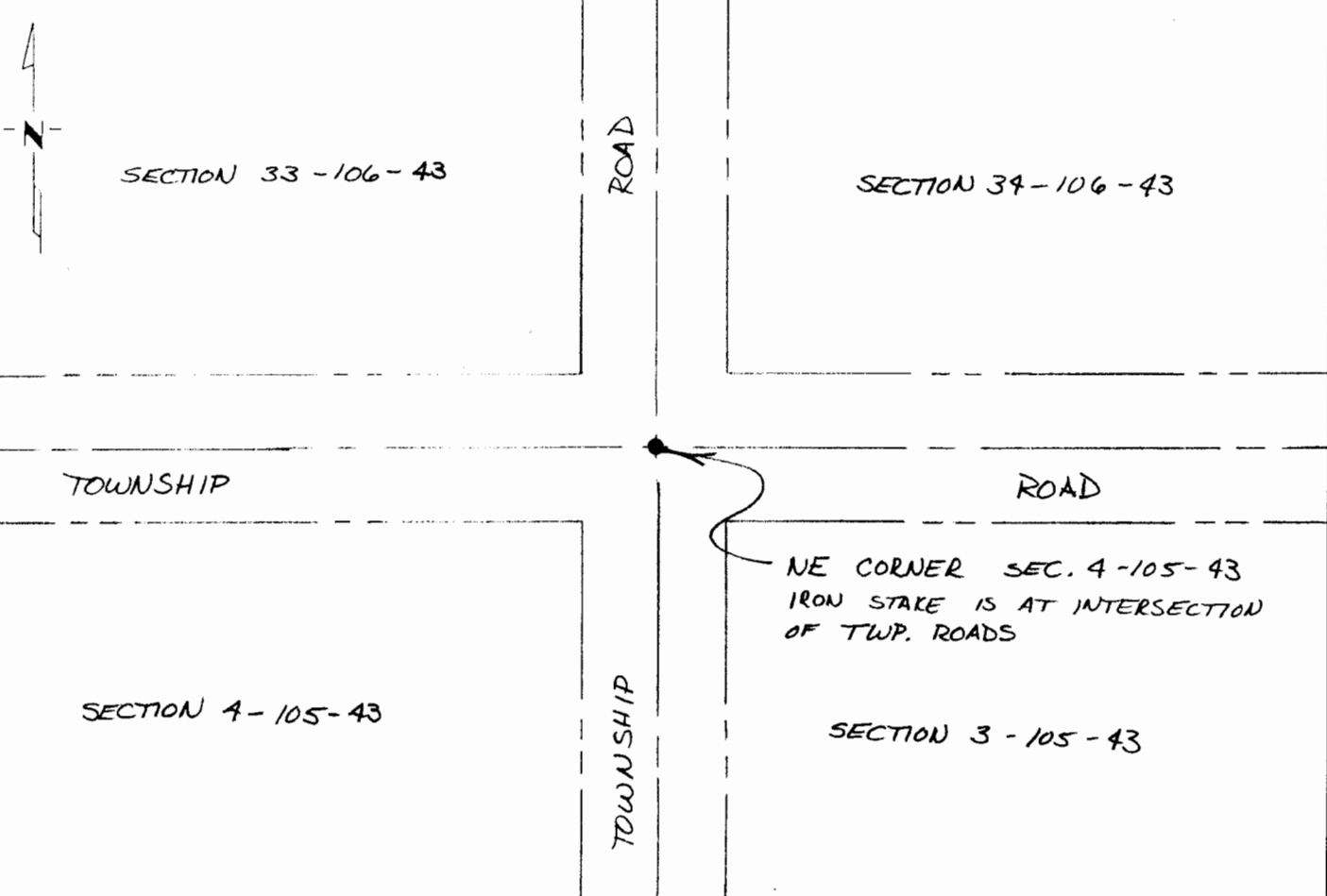
NORTHEAST Corner of Section 4, Township 105 N, Range 43 W, 5 P.M.

STATE OF MINNESOTA, County of MURRAY

At the corner location shown on the sketch

- On 10/11/90 found a 12" x 12" x 24" STONE 3.5' BELOW SURFACE
DATE
AT INTERSECTION OF TOWNSHIP ROADS.
 left monument as found, lowered monument, removed monument (explain)
- On 10/11/90 placed a 5/8" x 30" IRON STAKE OVER TOP CENTER
DATE
OF STONE WITH SURVEY CAP RLS 6700.

SKETCH OF REFERENCE TIES



Statement of evidence relative to this corner location is on back of page.

I hereby certify that this document and the data contained herein was prepared by me or under my direct supervision.

C. Allen Ruggie SIGNATURE 10-30-90 DATE

Registration No. 6700

- Land Surveyor, Professional Engineer
- County Surveyor, County Engineer

OFFICE OF THE COUNTY RECORDER

County of _____

I hereby certify that this document was filed in the Co. Recorders office at _____ .M. on the _____ day of NOV 6 1890 A.D., 19 _____

County Recorder James V. Johnson

By _____, Deputy

DOCUMENT NO. _____

SURVEY NO. MU 1025

SIOUX ENGINEERING, INCORPORATED WINDOM, MINNESOTA